

Maestro Touch



Necta



Maestro Touch

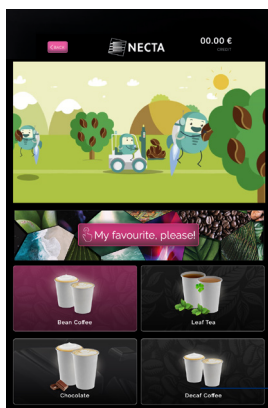


Design

- Black door with dark grey cabinet and black anodised aluminium profiles.
- Newly shaped wide delivery area.
- Industrial Touch screen with 6mm tempered glass protection. The screen features 24" TFT LCD display with 1080x1920 full HD resolution.
- Integrated webcam and speakers.



Modern and attractive design



Innovative and dynamic user interface



Maestro Touch is compatible with the digital payment app Breasy



User Interface

- Possibility to customize the GUI (HTML) through the My GUI tool.
- High level of user interface customization.
- Ability to host multi media content.



The best mechanical layout

- Z4000 for Espresso + Tea brewer for Freshbrew tea.
- Up to 7 soluble canisters.
- Dual cup: up to 1,000 cups capacity (diam 57mm/70-71mm/73-74mm/80mm).
- Syrups kit.



Electronics

- Latest generation CPU with premium performances, a unique board for machine and touch-screen.
- EVA-DTS data transmission.
- 32GB memory + 4GB RAM, 4 USB ports (2 USB 3.0).
- Connections: Ethernet, WiFi, Bluetooth and 3G/4G optional module.



Necta reserves the right to alter specifications without notice.



Features

Height	1830 mm
Width	650 mm
Depth	760 mm
Depth with open door	1320 mm
Weight	170 kg
Installed power	2500 W



Discover more about Maestro Touch



Discover more about Breasy



necta.evocagroup.com

Necta

EVOCA SPA
Via Roma 24, 24030 Valbrembo (BG) Italia
Tel. +39 035 606111 - Fax +39 035 606519



ISO 9001 - 2015

ISO 14001 - 2004